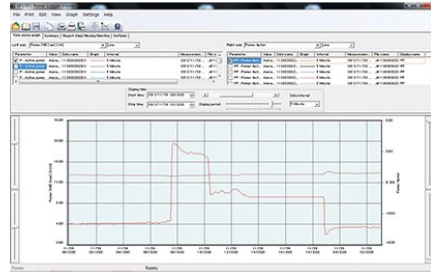


POWER LOGGER VIEWER SF1001

Analyze and Graph Logged Energy Data Captured by Hioki
Clamp On Power Loggers on a Windows PC



- Overview
- Specifications**
- Downloads
- Options
- Applications
- Gallery

Basic specifications

Read-compatible model	PW3360/3365 series, 3169 series
Supported computer OS	Computer running under Windows 8/8.1 (32/64bit), Windows 7 SP1 or later (32/64bit), Windows Vista SP2 or later (32bit), or XP SP3 or later (32bit)
Trend graph display function	[Display item] Voltage, current, active power, reactive power, apparent power, power factor, frequency, integrated active power, integrated reactive power, demand volume, demand value, voltage disequilibrium factor, Pulse, Harmonics (level, content, phase angle, total value, THD) [Stacked bar graph display] Up to 16 types of data series can be displayed in an overlay graph [cursor measurements] Measurement values can be displayed by the cursor
Summary Display Function	Displayed items are the same as for Trend Graph Display [Daily, weekly and monthly report displays]: Accumulates and displays daily, weekly and monthly reports over specified period. [Load factor calculation display]: Calculates and displays load factor and demand factor results with daily, weekly and monthly reports [Time span aggregation]: Aggregates data into up to four specified time spans
Waveform display	Displays waveform data at specified data
Harmonic display	[List display]: Displays a list of harmonic data at specified date [Graph display]: Displays a bar graph of harmonic data at specified date [Cursor calculation]: Calculates measurement data at cursors in waveform and graph displays
Copy function	Captures any display image to the clipboard
Print Function	Preview and print content shown on the trend graph, report, harmonic graph and settings displays. [Comment entry]: (Text comments can be entered in any printout) [Header/Footer settings]: Sets the header and footer for each printout [Printing support]: Any color or monochrome printing supported by the operating system
Report printing	Print (static) contents over a specific time period [Output contents]: Standard or selected output items [Available output items]: Trend graph, summary, daily report, harmonic list, harmonic graph, waveform [Report creation method]: Standard print [Report output settings]: Save/load report output settings

Q Search

Search Results Include Discontinued Products

? Ask

Quote

Related Products List



**CLAMP ON POWER
HITESTER**
3169



**CLAMP ON POWER
LOGGER**
PW3365



**CLAMP ON POWER
LOGGER**
PW3360

Search Category

- > Data Acquisition (DAQ) | Oscilloscopes | Memory Recorders
- > Data Loggers | Multichannel Loggers
- > Data Loggers | Temperature Data Loggers | Compact Loggers
- > LCR Meters | Impedance Analyzers | Capacitance Meters
- > Resistance Meters | Battery Testers
- > Super Megohmmeters | Electrometers |

Search Applications

- By Industry
- > Automotive, Transport
 - > Mechatronics, Motors, Inverters
 - > Power, Energy, Environment
 - > Components, Semiconductors, FPD, PCB

About Hioki

- > Message from President
- > Hioki Vision
- > Business Overview
- > Quality

- > Electrical Safety Testers | Hipot, Insulation, Leakage Testers
 - > High Precision Power Meters | Power Analyzers
 - > RGB LASER, LED Optical Meters | LAN Cable Testers
 - > Digital Multimeters (DMMs) | Testers
 - > Clamp Meters | Clamp Multimeters
 - > Solar panel, Photovoltaic (PV) system maintenance
 - > Meter Relays | CTs | Shunts
 - > Other Electrical Measuring Instruments
- Picoammeters
 - > Benchtop Digital Multimeters (DMMs)
 - > Signal Generators | Calibrators
 - > Power Quality Analyzers | Power Loggers
 - > Current Probes, Sensors | Non-contact voltage probe, CAN sensors
 - > Magnetic Field | Temperature | Sound Level | Lux | Rotation
 - > Insulation Testers | Megohmmeters
 - > Ground Resistance Testers | Phase Rotation Meters | Voltage Detectors
 - > Bare board/Package/Populated Board Testing
 - > Specialized Solutions
- > Home Appliances, OA, Communications
 - > Chemical, Food Testing, Pharmaceutical
 - > Construction, Medical

By Application

 - > R&D, Testing
 - > QA, Inspection
 - > Manufacturing, Production lines
 - > Service, Maintenance
- > Environmental and Social Responsibility
 - > Company Profile
 - > Hioki Group

